

# IBPSA-USA Strategic Education Plan

Developing a roadmap for educational content



Education Committee



# How do we train the next generation of BEM Experts in the U.S.?



# Problem Definition (open ended)

A: What tools can be used / built to share educational content effectively?



B: What educational content is needed



C: The solution must include a self-sustaining business model.



# BEM Landscape

What magnitude of membership does IBPSA-USA serve?



# What is IBPSA-USA?

Principles – Research and Science

Members

- › Software developers
- › Consultants
- › Academics

Functions through volunteer board, committees, and management team



# What is IBPSA-USA?

## What should IBPSA-USA Provide?

Principles – Research and Science

Members

- › Software developers
- › Consultants
- › Academics



➔ What do you as a member of IBPSA-USA want IBPSA-USA to provide



**“Never doubt that a  
*small group* of  
thoughtful,  
committed citizens  
IBPSA-USA Members  
can change the world;  
indeed, it’s the only  
thing that ever has.”**

**– Margaret Mead**



# Strategic Education Plan: Our goals

**A: What is the role of IBPSA-USA in professional education of modelers?**

**B: What are the knowledge gaps that exist?**

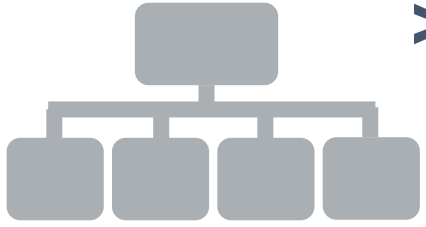
- › Entry level training – Fundamentals
- › Mid level training – Best practice workflows and application of energy codes
- › High level training – The Next Cool Thing

**C: Alignment of solution to IBPSA-USA**





# Strategic Education Plan: Learning Management System & Educational Content



## > Content Framework

- Training Courses
- Knowledge Hub
- External Resources
- Marketing



## > LMS Recommendation

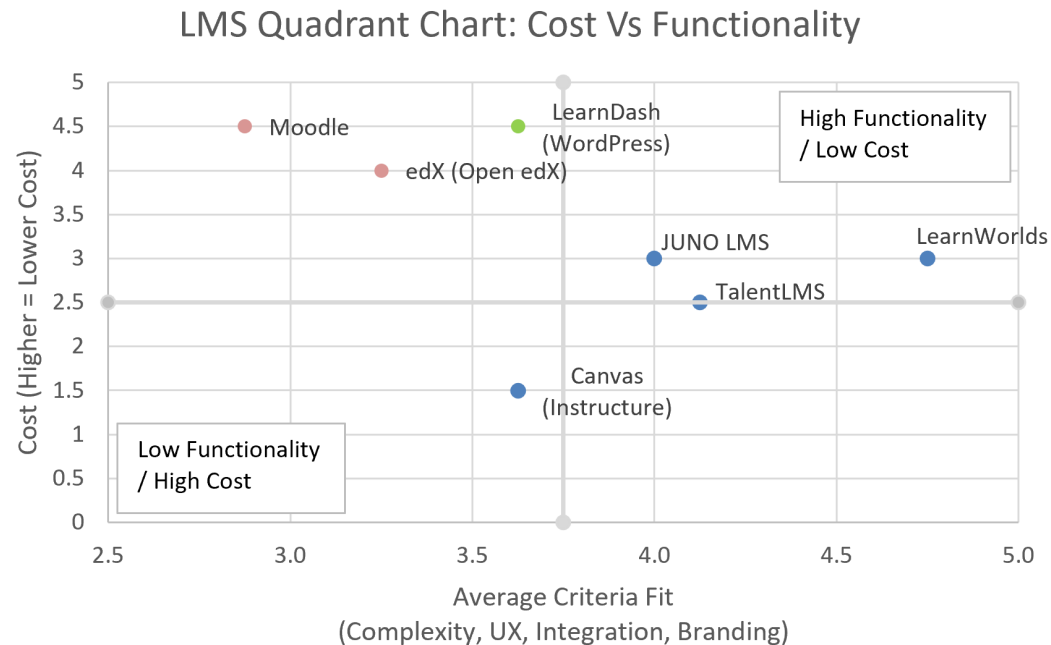
**“Learning Management System (LMS)**

- a platform for hosting, managing, and tracking educational content.”

# Strategic Education Plan: Learning Management System & Educational Content



## > LMS Recommendation

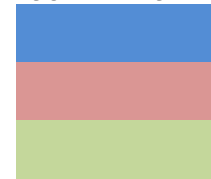


### LMS Hosting Type Key:

Hosted/SaaS

Self-hosted

Hybrid



## > Project ideas outline a roadmap for the next 10 years

# Strategic Education Plan: Roadmap



- › **Near Term:** Launch LMS & BEM Fundamentals Course
  - › **Short Term:** Develop mid-level training, such as applying ASHRAE 90.1 PRM
  - › **Long Term:** Establish a BEM Credential
- › Go check it out, provide feedback, and develop your own project ideas!

# Thank You

Michael Sawford (A2 Efficiency)  
[michael.sawford@a2efficiency.com](mailto:michael.sawford@a2efficiency.com)

