

Ladybug Tools
Open Source Project
(Python SDK + Free Grasshopper Plugin)

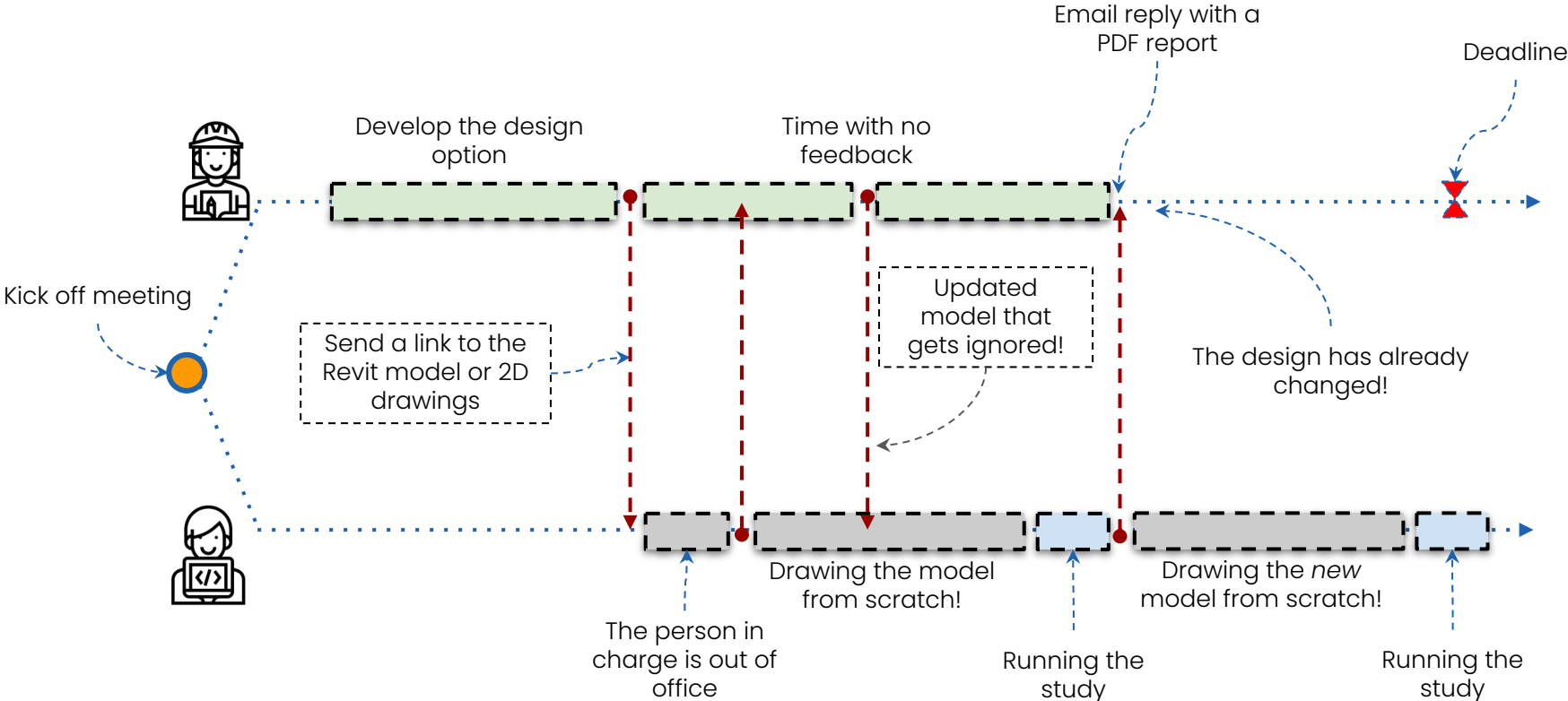


Pollination
Commercial Product
(Rhino/Revit Plugin, Cloud Service, App Store)

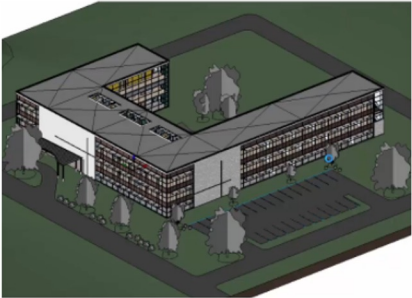
Eliminating the redrawing-from-scratch problem in BIM to BEM

Chris Mackey, Co-Founder of Ladybug Tools LLC | chris@ladybug.tools

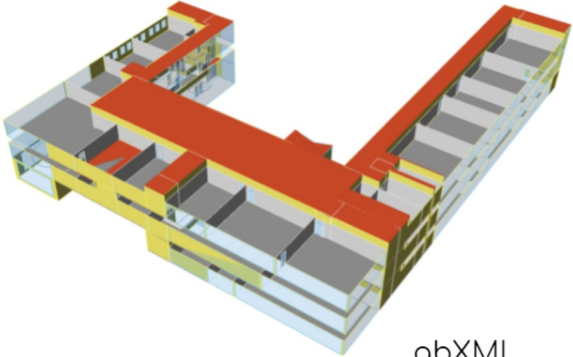
The "Two-Week Turnaround" Problem



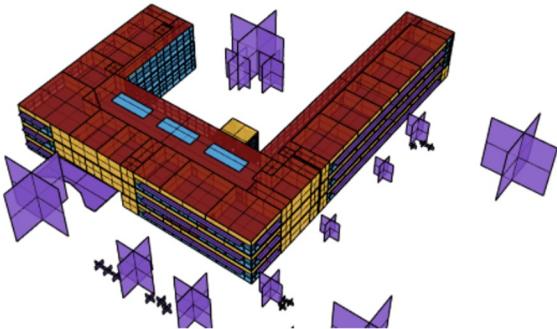
Extracting Clean Analytical Models from Revit



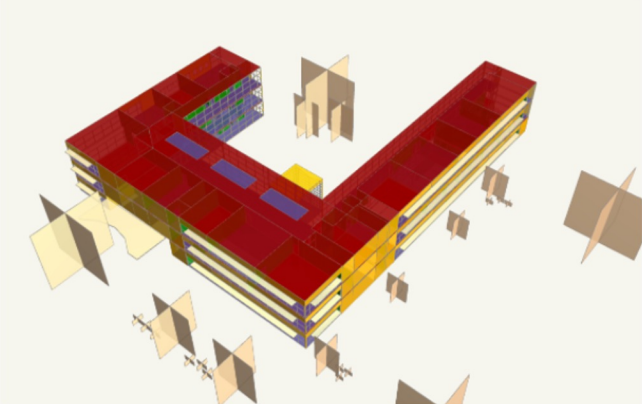
— R REVIT —>



gbXML



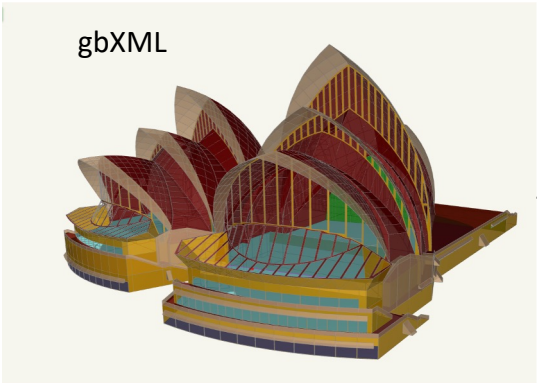
HBJSON



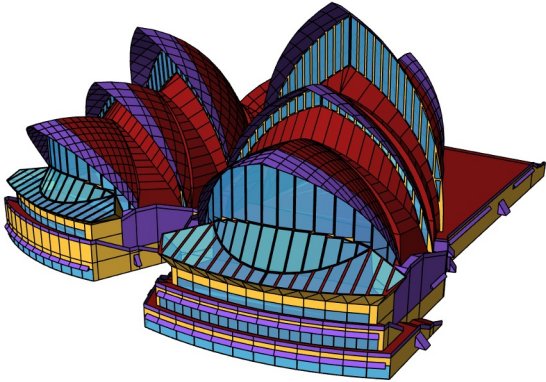
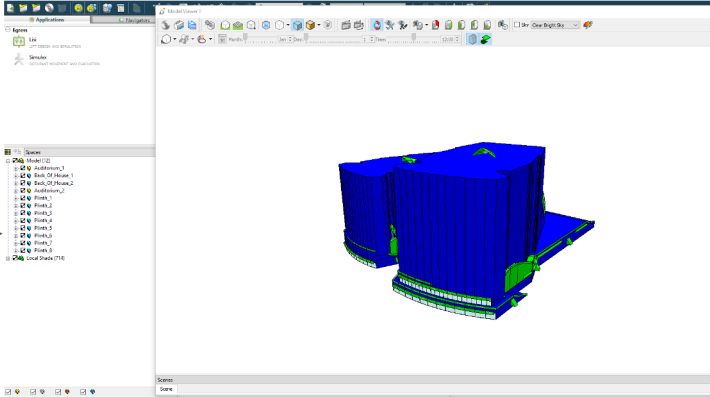
gbXML



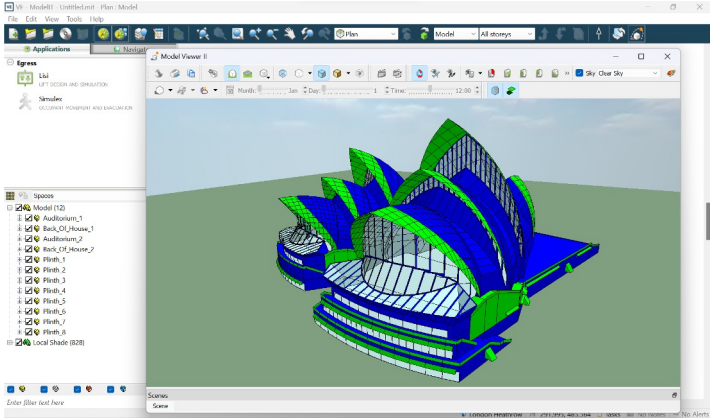
Import Clean Analytical Models to BEM



IES



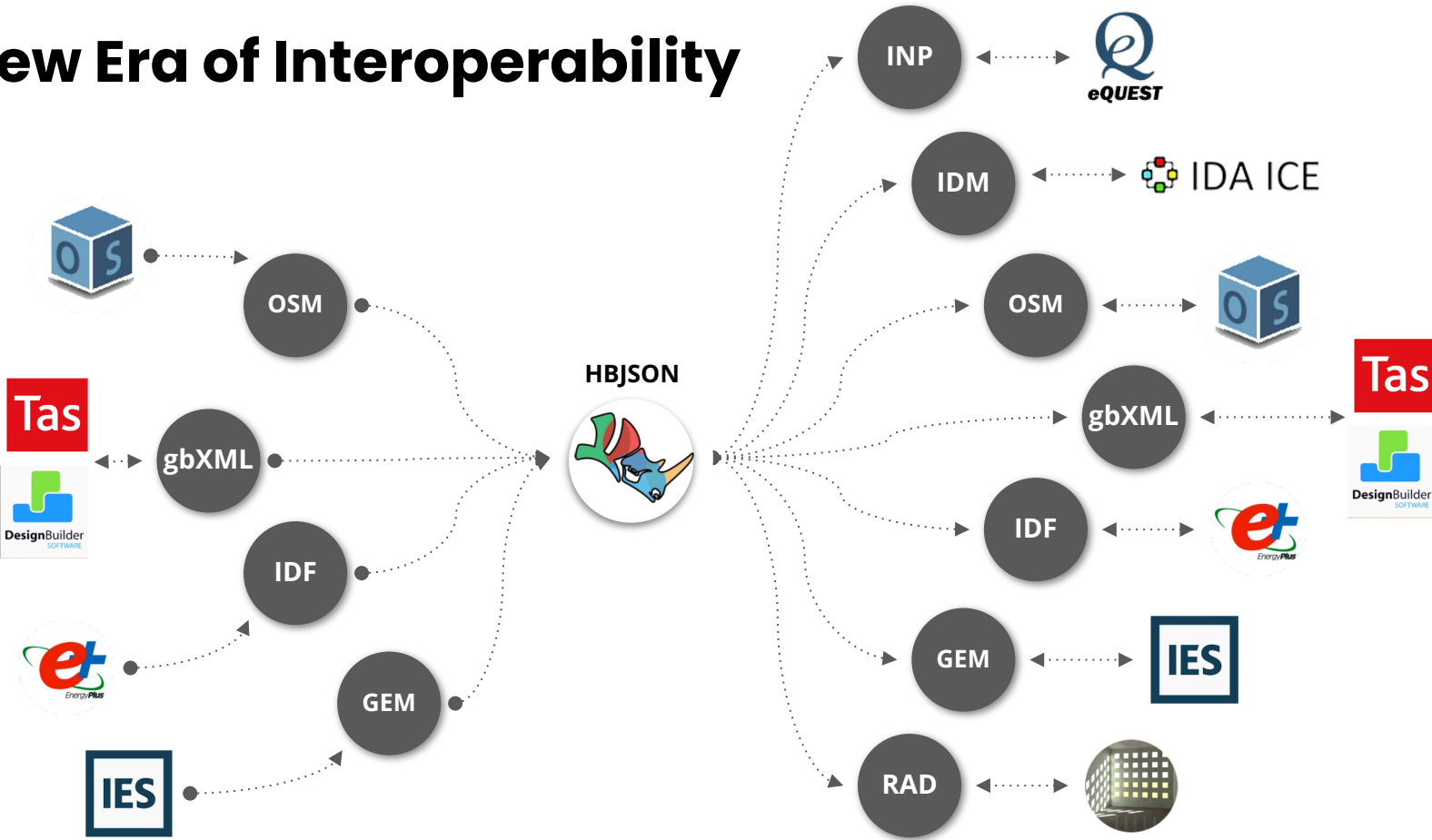
HBISON



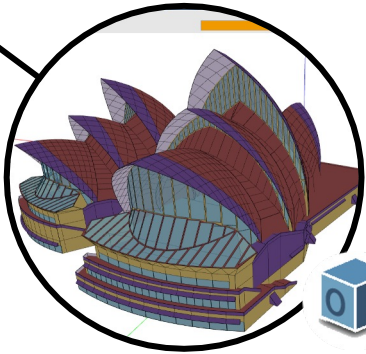
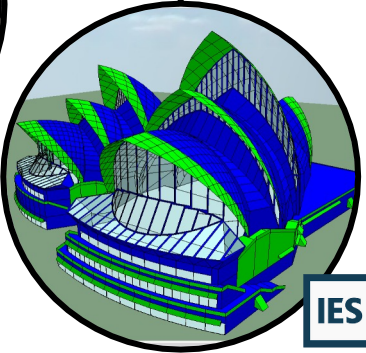
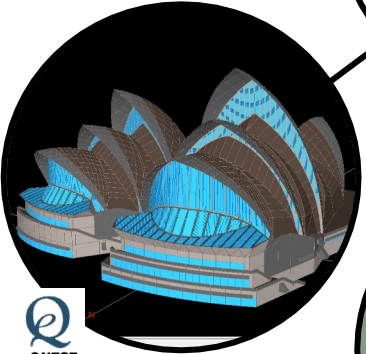
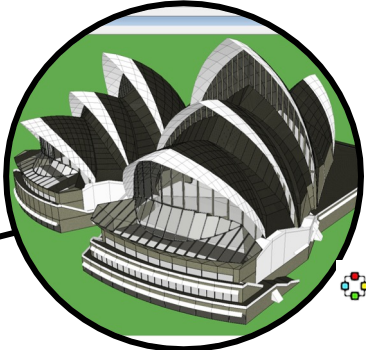
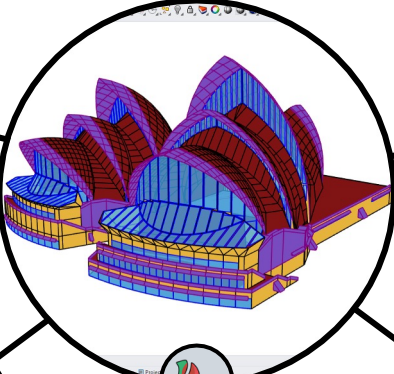
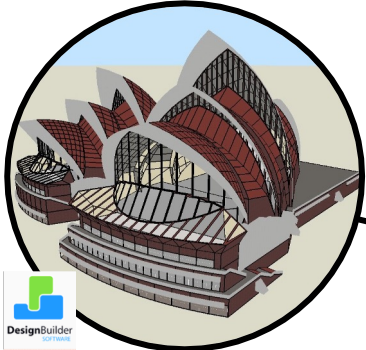
GEM



A New Era of Interoperability



A New Era of Interoperability



Extract a Clean Analytical Model from Revit



Cory Mosiman

Software Developer at PassiveLogic

"I just wanted to say I really appreciate this plugin. After dealing with Revit's default gbXML export (which was awful), the functionality in this model export is a breath of fresh air."



An Honest Approach to Help you with Imperfect Models



Levent Kocalioglu

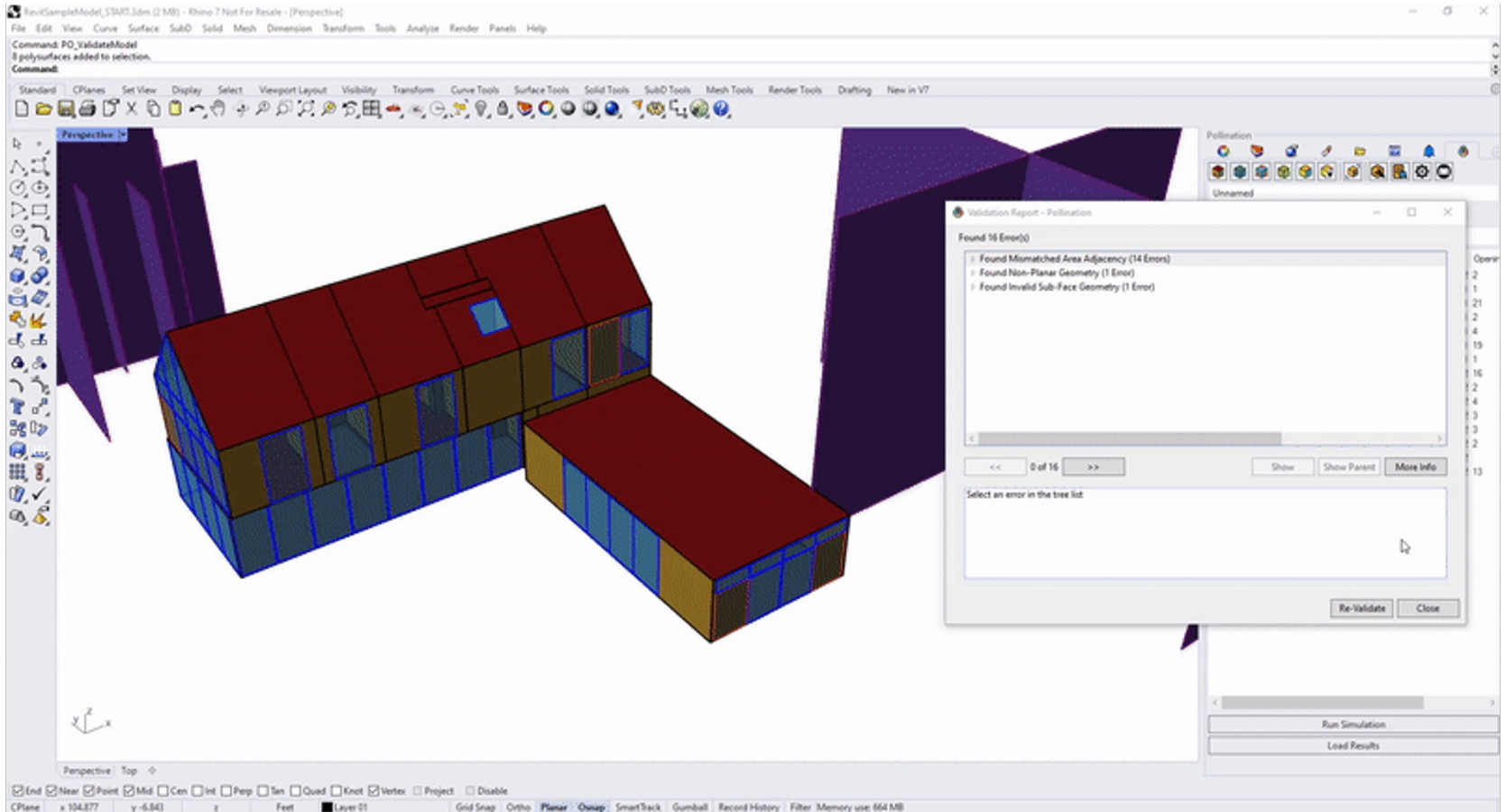
Building Physics and Sustainability Consultant
at Cundall

"It was amazing seeing that exporting a clean analytical model from BIM is possible using the Pollination Revit plugin. More importantly, its interoperability feature enables seamless data exchange with other building simulation tools for parametric modeling.

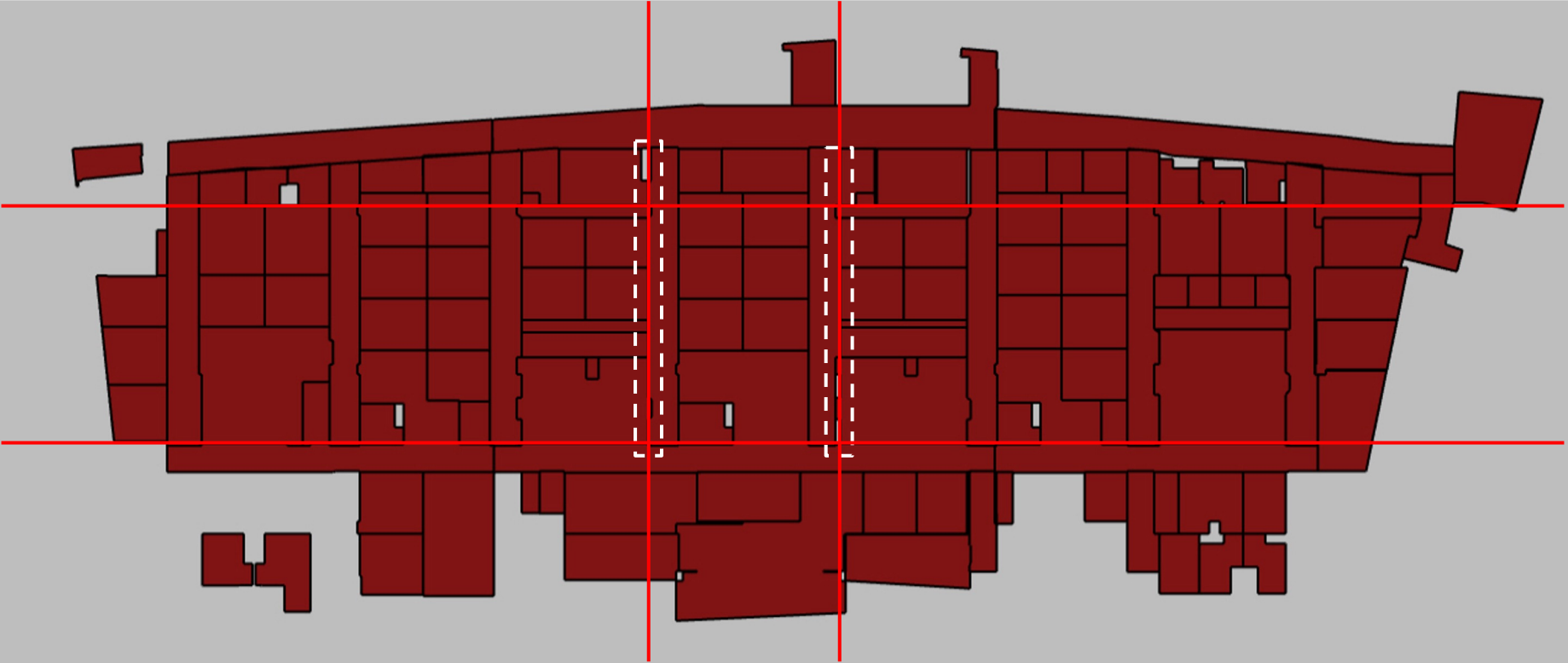
I believe there is no magic happening behind the Pollination workflow - it does not offer a on-size-fits-all solution. However, with some user interaction, Pollination saves significant amount of time in translating Revit models."



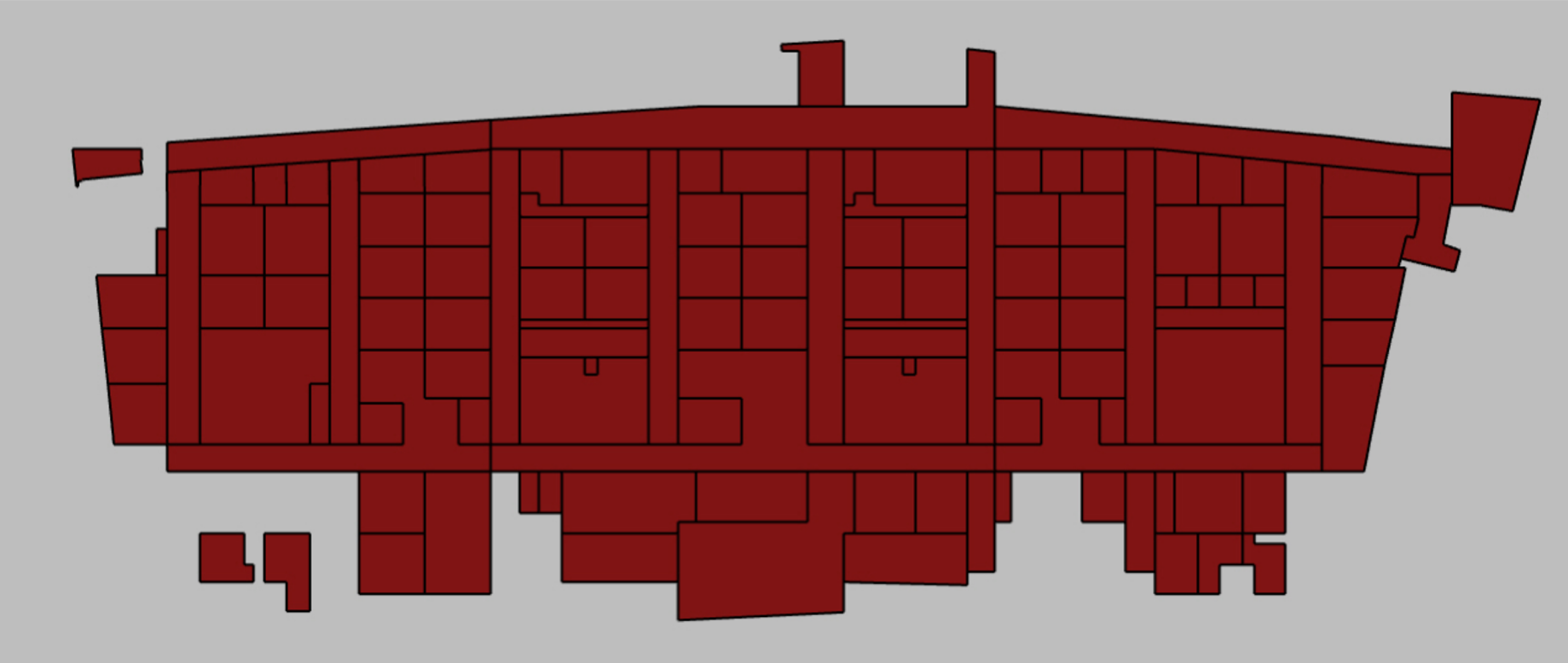
Why it Works – Model Validation



Why it Works - Automated Commands



Why it Works - Automated Commands



Energy Models Built a Fraction of the Time

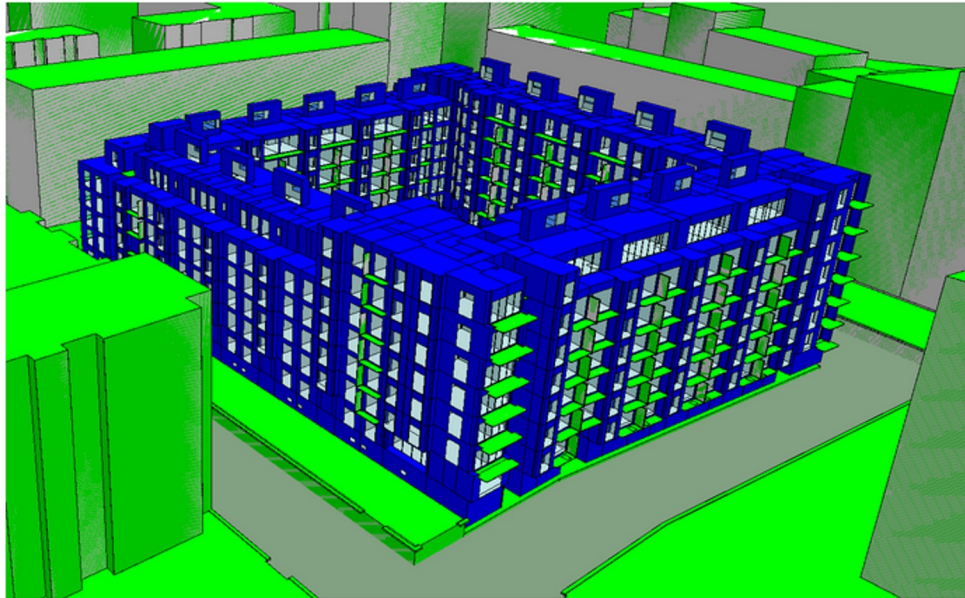


Room2D geometries for Story "Story_" have floor elevations that are too dif...

Revit Plugin bug-report ksobon



So now I have beautiful my model with 2030 zones, balconies as shading and context buildings directly from Revit! Did it in about 7-8 hours in total and expect to be able to do it faster now that I understand the mechanics.

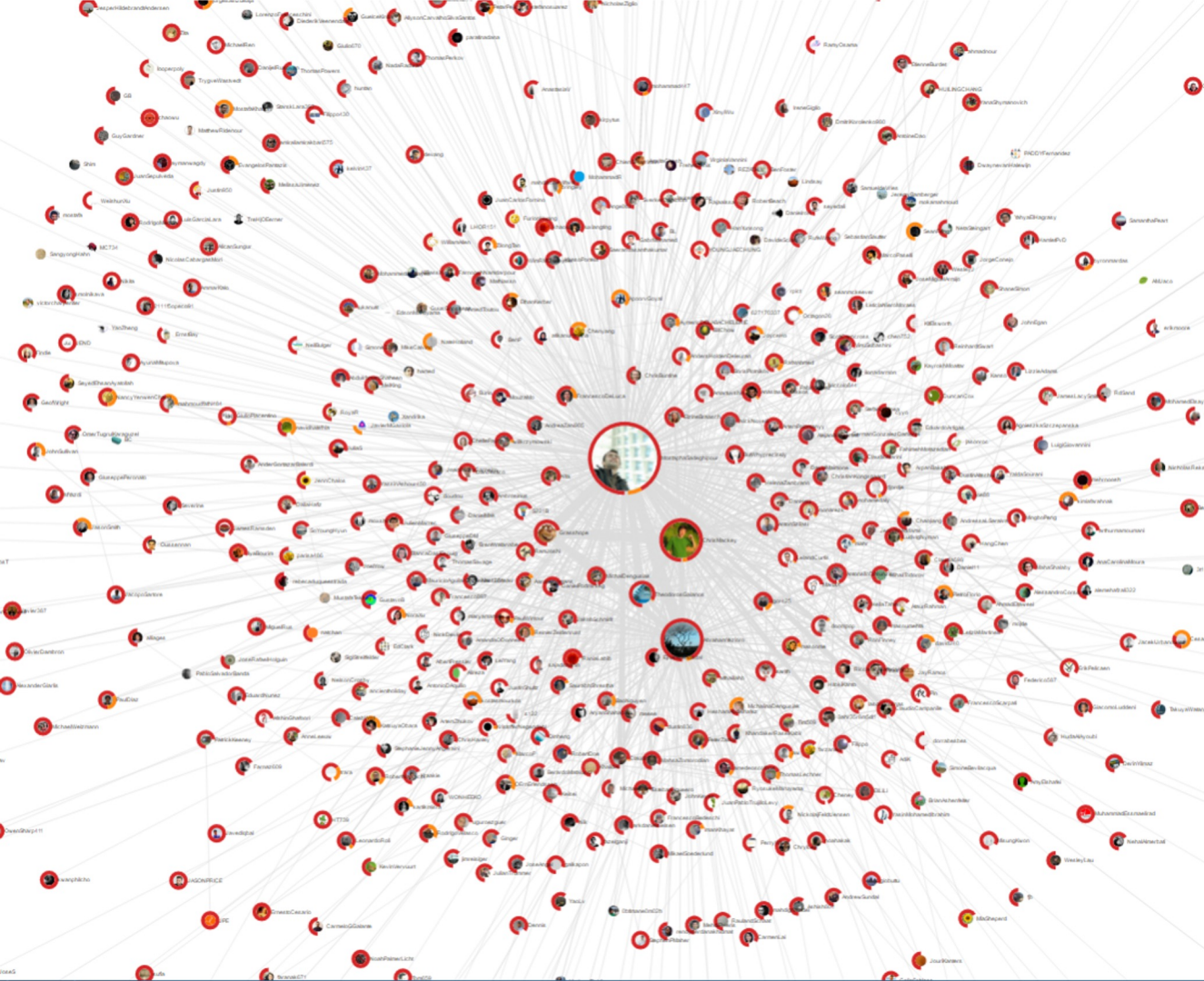


Nov 25

13 / 17
Dec 5

2d ago





Our Community

+ 640,000

Downloads - Food4Rhino

+3,000

Monthly Active Forum
Members

~ 25

New Forum Topics per Day

~ 6,000

Forum Page Views per Day



Companies Using Pollination

view.

Thornton
Tomasetti

RAMBOLL

ARUP

Perkins&Will

BRA+

W-B

A | S
G | G

Stantec

EYP/

WSP

SMITHGROUP

MASS.

Foster + Partners

adaptris

AECOM

CMTA

beyond
carbon

MCW

h+k

CUNDALL

LONG DIVISON
CONSULTING

rmf RMF Engineering
Reliability. Efficiency. Integrity.

tp

bennett

NIKKEN
EXPERIENCE, INTEGRATED

EQUINOX

floSolve
Complete CFD Solutions

atmoslab

ABUD

KEO

Technical
University
of Munich TUM

CANNONDESIGN

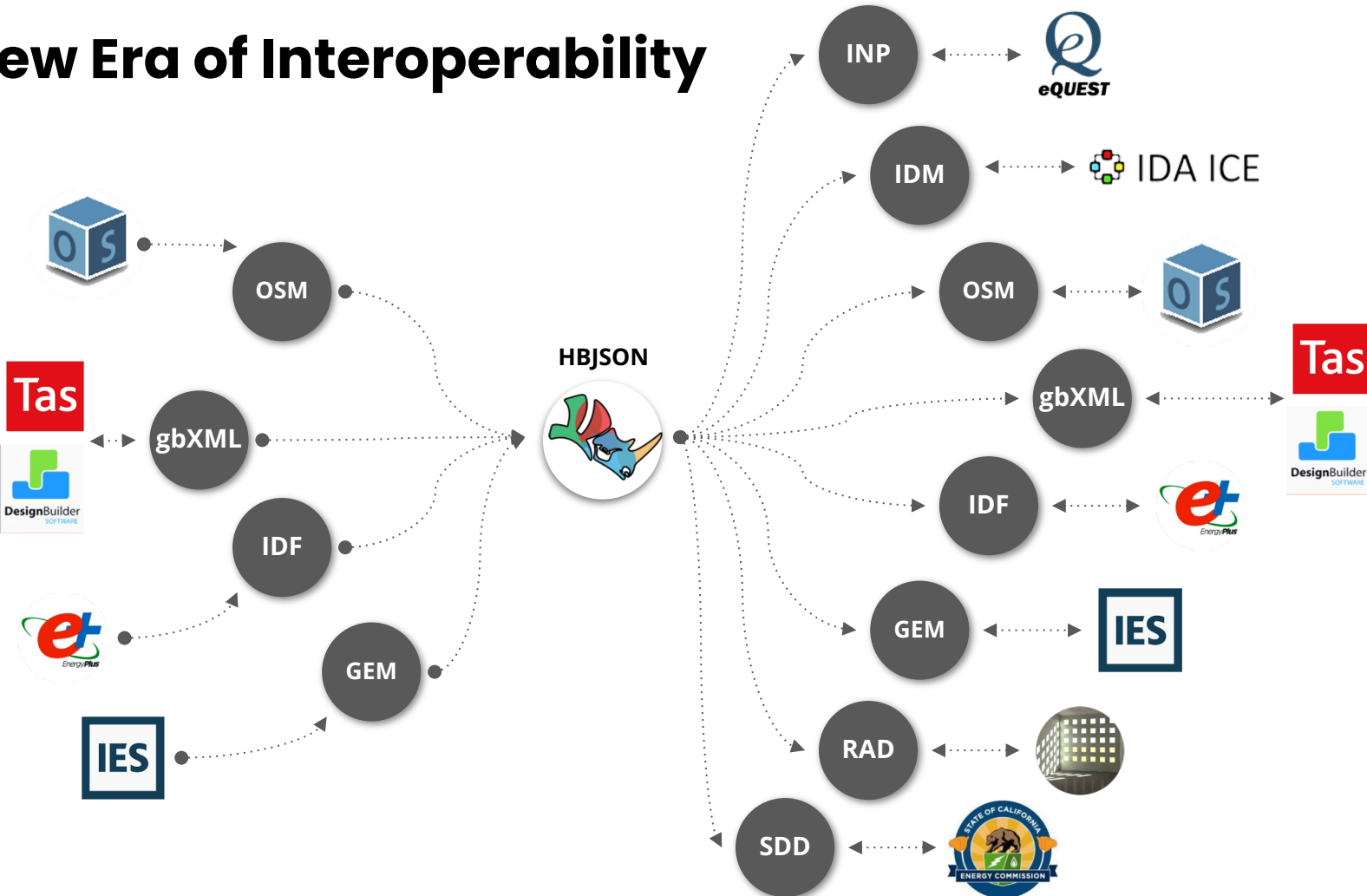
ennead

SANDBOX
SOLAR

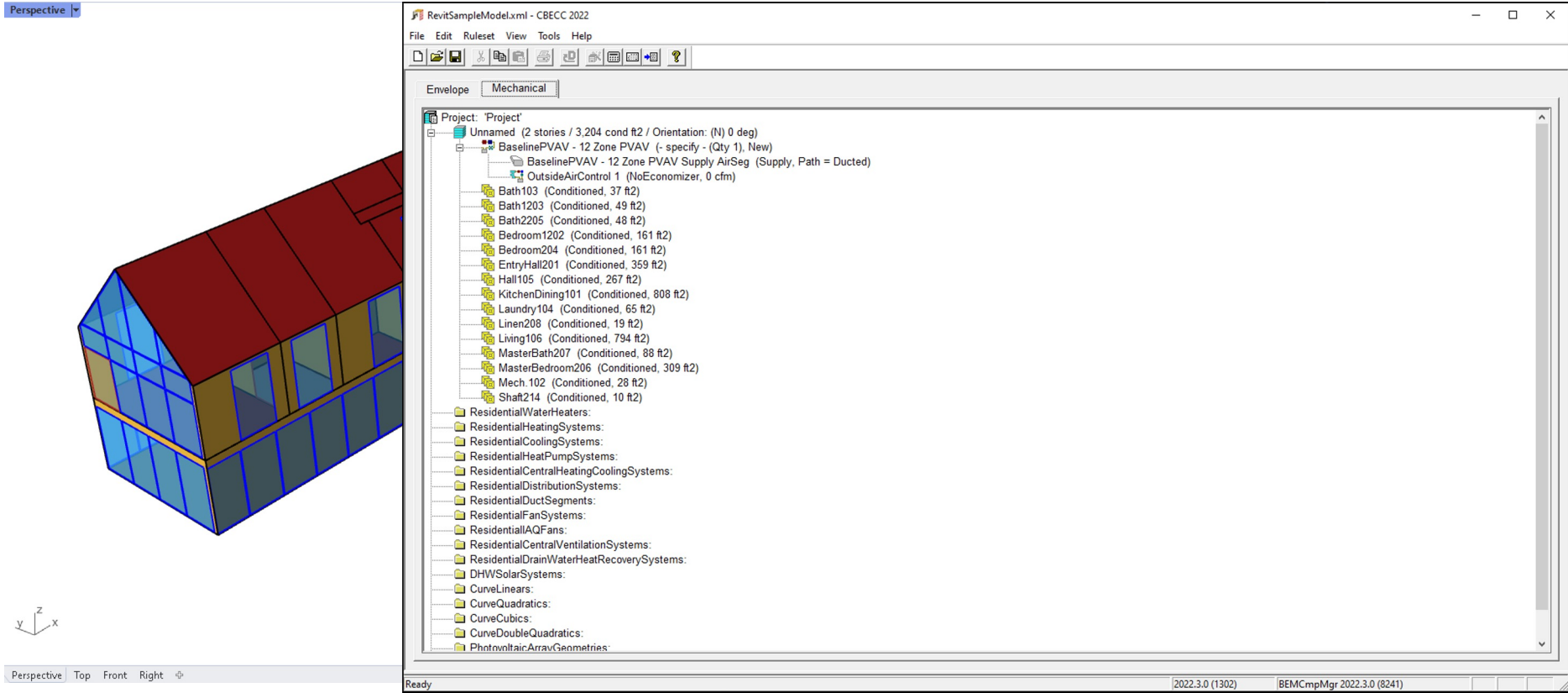
DLR Group



A New Era of Interoperability



A New Era of Interoperability



<https://discourse.pollination.cloud/t/export-your-pollination-models-directly-to-cbecc>



Transform Rhino into your favorite GUI for Building Analytical Models



Justin Shultz

Senior Building Performance Analyst and Associate
Principal at EYP

"The Pollination Rhino plugin is the best tool for generating building performance analysis geometry. It has a ton of features for improving my workflow and is interoperable with all my analyses tools and methods. I now use it on all my projects."

